

# MONTHLY MEMBERSHIP PROGRESS REPORT

LOCATION NEBRASKA

District 38 L

Results as of: 8/31/2023

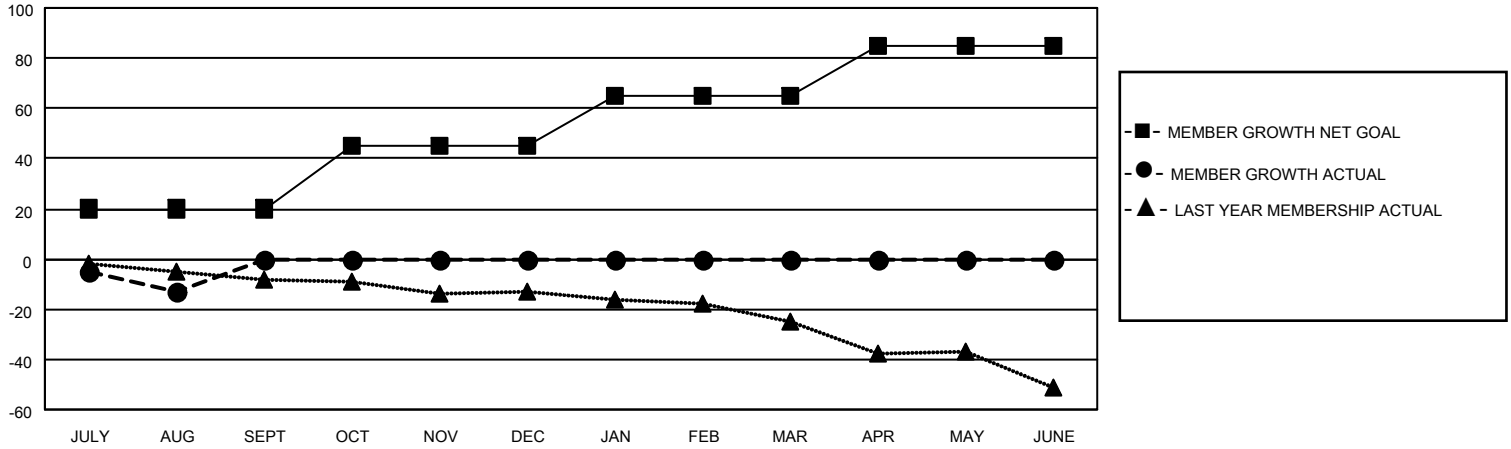
Clubs			
RESULTS FOR 2023-2024			
QUARTER	NEW CLUB GOAL	NEW CLUBS	DROPPED CLUBS
JULY/AUG/SEPT	0	0	0
OCT/NOV/DEC	0	0	0
JAN/FEB/MAR	0	0	0
APR/MAY/JUNE	1	0	0

Members			
RESULTS FOR 2023-2024			
QUARTER	MEMBER GROWTH NET GOAL	MEMBER GROWTH ACTUAL	DROPPED MEMBERS ACTUAL (including transfers)
JULY/AUG/SEPT	20	2	14
OCT/NOV/DEC	25	0	0
JAN/FEB/MAR	20	0	0
APR/MAY/JUNE	20	0	0

**GOALS AND ACTUAL NEW CLUBS CUMULATIVE**



**GOALS AND ACTUAL MEMBERS CUMULATIVE**



DROPPED CLUBS: 0	
<b>DROPPED MEMBERS</b>	
DECEASED	1
CLUB CANCELLED	0
OTHER	13
<b>TOTAL</b>	<b>14</b>

1 CLUBS OF 36 ADDED 1 OR MORE NEW MEMBERS

[CLICK HERE FOR CUMULATIVE MEMBERSHIP DATA](#)

<u>GENDER DISTRIBUTION</u>	
MALE	528 (72.83%)
FEMALE	197 (27.17%)
NON BINARY	0 (0.00%)
PREFER NOT TO ANSWER	0 (0.00%)
<b>TOTAL FAMILY UNIT MEMBERS</b>	
	<b>173</b>
<b>FAMILY MEMBERS PAYING HALF DUES</b>	
	<b>87</b>